



The Conversion of Paul

Sunday, January 25, 2009

*Evangelical Lutheran Worship: Setting Three
The Week of Prayer for Christian Unity Ends*

The First Evangelical Lutheran Church

A Congregation of the Evangelical Lutheran Church in America

211 Eighth Street SW

Strasburg, Ohio 44680

Church Phone: (330) 878-5581

Church Email: first-lutheran-stras@juno.com

Church FAX: (330) 878-5286

Pastor's Email: swoyen0774@yahoo.com

Pastor's Residence: (330) 878-7444

Website: www.first-lutheran.net

The Rev. Steven Woyen

Pastor

Ruth Patrick

Organist

Tim Whitman

Choir Director

Chris Wood

Office Secretary

GATHERING

The Gathering Music: "Faith of Our Fathers"

The Welcome & Announcements

The assembly stands

The Confession & Forgiveness ELW p. 94

The Gathering Hymn
"How firm a Foundation" **ELW 796**

The Greeting & Kyrie ELW p.138

The Hymn of Praise ELW pp.139-140

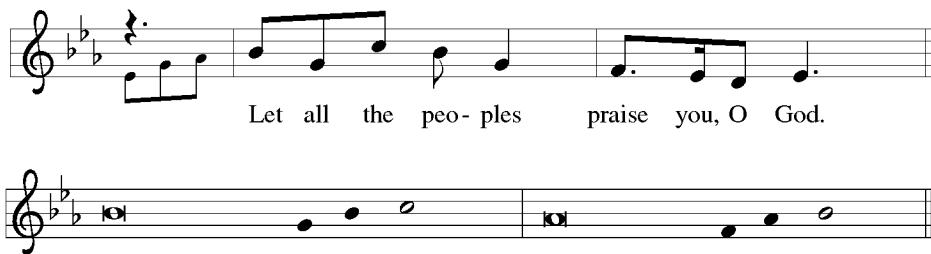
The Prayer of the Day ELW p. 142

The assembly is seated

WORD

The First Reading Acts 9:1-22

The Psalmody Psalm 67



- ¹May God be merciful to ¹us and bless us;
 may the light of God's face ¹shine upon us.
- ²**Let your way be known ¹upon earth,**
 your saving health a- ¹mong all nations.
- ³Let the peoples praise ¹you, O God;
 let all the ¹peoples praise you.
- ⁴**Let the nations be glad and ¹sing for joy,**
 for you judge the peoples with equity and guide all the na- ¹tions on earth. *Refrain*
- ⁵Let the peoples praise ¹you, O God;
 let all the ¹peoples praise you.
- ⁶**The earth has brought ¹forth its increase;**
 God, our own ¹God, has blessed us.
- ⁷May God ¹give us blessing,
 and may all the ends of the earth ¹stand in awe. *Refrain*

The Second Reading	Galatians 1:11–24
<i>The assembly stands</i>	
The Gospel Acclamation	ELW p. 142
The Holy Gospel	Luke 21:10–19
<i>The assembly is seated</i>	
The Children’s Message	
The Sermon	
<i>Silence for reflection.</i>	
<i>The assembly stands</i>	
The Hymn of the Day	
“Lord, keep us steadfast in your Word”	ELW 517
The Creed	ELW p. 104
The Prayers & Peace	ELW pp. 105-106
<i>The assembly is seated</i>	
<u>MEAL</u>	
The Offering	
The Senior Choir: “ Lord of the Dance”	
<i>The assembly stands</i>	
“You are Holy”	ELW 525
The Great Thanksgiving	ELW pp. 144-145
The Thanksgiving at the Table	ELW p. 108
The Lord’s Prayer	ELW p. 112
<i>The assembly is seated</i>	
The Lamb of God	ELW p. 146
The Distribution	
<i>Believing in the Real Presence of Christ, the Evangelical Lutheran Church in America practices Eucharistic Hospitality. Admission to the Sacrament is by invitation of the Lord, presented</i>	

through the Church to those who are baptized. Those who do not wish to receive the Sacrament may approach with their arms crossed to receive a blessing.

Music during Distribution

“You are Mine”

ELW 581

“There is a Balm in Gilead”

ELW 614

The assembly stands

The Post-Communion Prayer

ELW p. 146

SENDING

The Blessing

ELW p. 146

The Sending Hymn

“Faith of our Fathers”

ELW 813

The Sending

ELW p. 146

The Sending Music: “Lord, Keep Us Steadfast in Your Word”

+ + + + + + + + + +

Acknowledgements

Unless indicated all hymns and liturgical music from Sundays and Seasons.com. Copyright © 2008 by Augsburg Fortress. All rights reserved. Psalm refrain reproduced from *Psalter for Worship Year A* Copyright © 2007 by Augsburg Fortress. All rights reserved. Psalm Tone reproduced from *Psalter for Worship Year C* Copyright © 2006 by Augsburg Fortress. All rights reserved. Reprinted by permission under Augsburg Fortress Liturgies Annual License #20608.

WORSHIP LEADERS

Assisting Minister

Brenda Bitikofer

Lector

Carol Rouse

Ushers:

Gary Bixler, Don Weber, Gary Courtwright, Ed Yackey

PRAYER CONCERNS—Delores Himes, Nancy Wherley, Margaret Baker, Jane Woyen, Lail Conner, Tim Schram, Chuck Larson, and all nursing home residents.

The Altar Flowers are given by Evelyn Jones in memory of her husband Daniel E. Jones.

The Eternal Candle is given by Tim Whitman in honor of the Senior Choir.



The Social Missions committee has chosen to once again support PAL, the Homeless Shelter and Harbor House with a Community Help Tree for the months of January, February & March 2009.

Please take a tag from the tree located in the Social Hall (near the back door) purchase item and when returning items placing in box under the tree for these worthy organizations. Any money given in the months of January, February & March to Social Missions will be divided between the three organizations. As always thank you for your generous support of this mission.

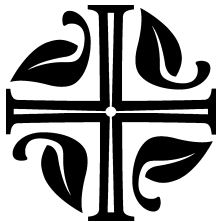
THIS WEEK AT FIRST LUTHERAN (Week of 1/25—2/1)

Sunday	<u>The Conversion of Paul</u> 9 AM—Christian Education/Catechism (Various locations) 10:15 AM—Holy Communion (Social Hall)
Monday	No Scheduled Activities
Tuesday	9 AM—Busy Bees (Quilter’s Room)
Wednesday	10 AM— <i>The Divine Drama</i> 7 PM—Senior Choir (Social Hall)
Thursday	7 PM— <i>The Divine Drama</i>
Friday	No Scheduled Activities
Saturday	No Scheduled Activities
Sunday	<u>The Presentation of Our Lord</u> 9 AM—Christian Education/Catechism (Various locations) 10:15 AM—Holy Communion (Social Hall)

NEW CHURCH OFFICE HOURS : Monday – 12noon – 4pm (Chris); Tuesday – Pastor in office; Wednesday – Pastor in office, Chris in office from 12noon – 4pm; Thursday – Pastor in office, Chris in office from 12noon-4pm; Friday – 12noon- 4pm (Chris).



On January 29th the UMC, Strasburg, will be distributing food from their new Food Pantry. The hours will be from 9:00am – 11:00am and 5:30pm – 7:30pm.



Evangelical Lutheran Worship Gifts & Memorials

You may still purchase a hymnal. The cost is \$20.00 per hymnal. Please denote how you would like the wording on the book plate.

**Those who bring sunshine to the lives
Of others
Cannot keep it from themselves.**

-God's Little Instruction Book

*Be not deceived; God is not mocked:
For whatsoever a man soweth, that shall he reap.*
Galatians 6:7