

The Confession of Peter

Sunday, January 18, 2009

The Week of Prayer for Christian Unity Begins

The First Evangelical Lutheran Church

A Congregation of the Evangelical Lutheran Church in America

211 Eighth Street SW

Strasburg, Ohio 44680

Church Phone: (330) 878-5581

Church Email: first-lutheran-stras@juno.com

Church FAX: (330) 878-5286

Pastor's Email: swoyen0774@yahoo.com

Pastor's Residence: (330) 878-7444

Website: www.first-lutheran.net

The Rev. Steven Woyen

Pastor

Ruth Patrick

Organist

Tim Whitman

Choir Director

Chris Wood

Office Secretary

GATHERING

The Gathering Music: “The Church’s One Foundation”

The Welcome & Announcements

The assembly stands

The Confession & Forgiveness

ELW p. 94

The Gathering Hymn
“**Built on a Rock**”

ELW 652

The Greeting & Kyrie

ELW p.138

The Hymn of Praise

ELW pp.139-140

The Prayer of the Day

ELW p. 142

The assembly is seated

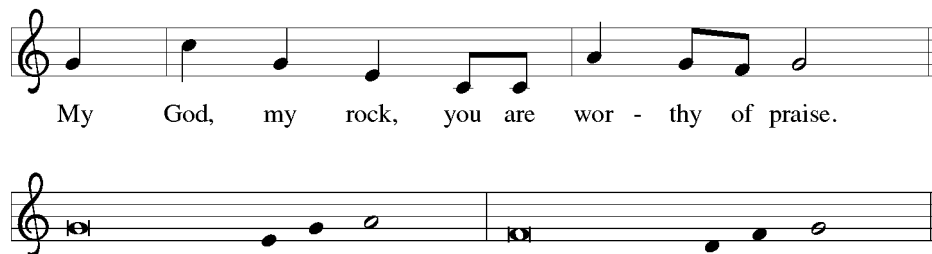
WORD

The First Reading

Acts 4:8-13

The Psalmody

Psalm 18:1–6, 16–19



- ¹I love you, O ¹LORD my strength,
O LORD my stronghold, my crag, ¹and my haven;
- ²**my God, my rock in whom I ¹put my trust,
my shield, the horn of my salvation, ¹and my refuge. *Refrain***
- ³I will call upon the LORD, who is worthy ¹to be praised,
and so shall I be saved ¹from my enemies.
- ⁴**The breakers of death rolled ¹over me,
and the torrents of oblivion made ¹me afraid.**
- ⁵The cords of Sheol en- ¹tangled me,
and the snares of death were ¹set for me.
- ⁶**I called upon the LORD in my distress and cried out to my ¹God for help.
From the heavens the LORD heard my voice; my cry ¹reached God's ears. *Refrain***
- ¹⁶You reached down from on ¹high and grasped me;
you drew me out ¹of great waters.
- ¹⁷**You delivered me from my strong enemies and from those who ¹hated me,**

for they were too mighty for me.

¹⁸They confronted me in the day of my disaster;
but you, LORD, were my support.

¹⁹**You brought me out into an open place;
you rescued me because you delighted in me. Refrain**

The Second Reading

1 Corinthians 10:1–5

The assembly stands

The Gospel Acclamation

ELW p. 142

The Holy Gospel

Matthew 16:13–19

The assembly is seated

The Children's Message

The Sermon

Silence for reflection.

The assembly stands

The Hymn of the Day

“Christ is made the Sure Foundation”

ELW 645

The Creed

ELW p. 105

The Prayers & Peace

ELW pp. 105-106

The assembly is seated

MEAL

The Offering: “Balm In Gilead”

Sunday School Choir: “I’m Gonna Sing”

The assembly stands

“You are Holy”

ELW 525

The Great Thanksgiving

ELW pp. 144-145

The Thanksgiving at the Table

ELW p. 108

The Lord's Prayer

ELW p. 112

The assembly is seated

The Lamb of God

ELW p. 146

The Distribution

Believing in the Real Presence of Christ, the Evangelical Lutheran Church in America practices Eucharistic Hospitality. Admission to the Sacrament is by invitation of the Lord, presented through the Church to those who are baptized. Those who do not wish to receive the Sacrament may approach with their arms crossed to receive a blessing.

Music during Distribution

“My Hope is Built on Nothing Less” ELW 597
“There is a Balm in Gilead” ELW 614

The assembly stands

The Post-Communion Prayer ELW p. 146

SENDING

The Blessing ELW p. 146

The Sending Hymn

“The Church’s One Foundation” ELW 654

The Sending ELW p. 146

The Sending Music: Variations on “ Built On A Rock”

+ + + + + + + + + +

Acknowledgements

Unless indicated all hymns and liturgical music from Sundays and Seasons.com. Copyright © 2008 by Augsburg Fortress. All rights reserved. Psalm refrain reproduced from *Psalter for Worship Year A* Copyright © 2007 by Augsburg Fortress. All rights reserved. Psalm Tone reproduced from *Psalter for Worship Year C* Copyright © 2006 by Augsburg Fortress. All rights reserved. Reprinted by permission under Augsburg Fortress Liturgies Annual License #20608.

WORSHIP LEADERS

Assisting Minister

Sam D. Seward

Lector

Heather Lautenschleger

Ushers:

Gary Bixler, Don Weber, Ed Yackey, Gary Courtwright

PRAYER CONCERNS—Delores Himes, Tim Schram, Margaret Baker, Jane Woyen, Lail Conner, Chuck Larson, Nancy Wherley, and all nursing home residents.

The Altar Flowers are given by John & Brenda Bitikofer in honor of Adam’s 17th birthday on January 23rd.

The Eternal Candle is given by Debbie Larson to the Glory of God.

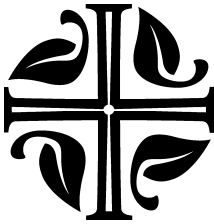


The Social Missions committee has chosen to once again support PAL, the Homeless Shelter and Harbor House with a Community Help Tree for the months of January, February & March 2009. Please take a tag from the tree located in the Social Hall (near the back door) purchase item and when returning items placing in box under the tree for these worthy organizations. Any money given in the months of January, February & March to Social Missions will be divided between the three organizations. As always thank you for your generous support of this mission.

NEW CHURCH OFFICE HOURS : Monday – 12noon – 4pm (Chris); Tuesday – Pastor in office; Wednesday – Pastor in office, Chris in office from 12noon – 4pm; Thursday – Pastor in office, Chris in office from 12noon-4pm; Friday – 12noon- 4pm (Chris).



On January 29th the UMC, Strasburg, will be distributing food from their new Food Pantry. The hours will be from 9:00am – 11:00am and 5:30pm – 7:30pm.



Evangelical Lutheran Worship Gifts & Memorials

In memory of all family members by Esther Olinger
In memory of my grandparents; Carl & Jean Baumen & Charles & Marie Bixler by Jennifer Bixler.
In memory of our parents; Carl & Jean Bauman & Charles & Marie Bixler by Gary & Pam Bixler.
In memory of our daughter Debbie by Mike & Doris Keener. (2)
In memory of Malia Myers by Ken & Adena Myers.
In memory of Marger & Paul Garber by Ken & Adena Myers.
In memory of Lucas Garber by Ken & Adena Myers.
In memory of Gladys Myers by Ken & Adena Myers.
In memory of Dwight Myers by Ken & Adena Myers.
In honor of Carl Myers by Ken & Adena Myers.



Please join us today after worship for our Chili cookoff. Also on the menu are hot dogs, corn chips, cheese and sour cream for your chili if you would like and drinks.



The following is the 2009 Church Council:

Karl Thomas – President
Robyn Burkett – Vice President
Carol Lautenschleger – Secretary
Dennis Jensen
Joe Himes
Sam D. Seward
Cheryl Wherley
Greg Wiggs
Katie Secrest
Janelle Allensworth
Jackie Somers
Pastor Steven
Jennifer Bixler, Treasurer

THIS WEEK AT FIRST LUTHERAN (Week of 1/18—1/25)

Sunday	<u>The Confession of Peter</u> 9 AM—Christian Education/Catechism (Various locations) 10:15 AM—Holy Communion (Social Hall) 11:30 AM—Chili Dinner (Social Hall) 6:30 PM—MLK Celebration Service (St. John’s UCC)
Monday	Martin Luther King Day 6:30 PM – Social Missions
Tuesday	9 AM—Busy Bees (Quilter’s Room) 12 Noon – Rachel Circle
Wednesday	<u>NO Divine Drama</u> 7 PM—Senior Choir (Social Hall)
Thursday	<u>NO Divine Drama</u> 9 AM – Martha Circle
Friday	No Scheduled Activities
Saturday	No Scheduled Activities
Sunday	<u>The Conversion of Paul</u> 9 AM—Christian Education/Catechism (Various locations) 10:15 AM—Holy Communion (Social Hall)

Pastor Steven is away Monday-Thursday for Continuing Education. Pastor Gary Friend from St. John’s United Church of Christ is available for any Pastoral emergencies.