



The Baptism of Our Lord—First Sunday after the Epiphany

Sunday, January 11, 2009

The First Evangelical Lutheran Church

A Congregation of the Evangelical Lutheran Church in America

211 Eighth Street SW

Church Phone: (330) 878-5581

Church FAX: (330) 878-5286

Pastor's Residence: (330) 878-7444

Strasburg, Ohio 44680

Church Email: first-lutheran-stras@juno.com

Pastor's Email: swoyen0774@yahoo.com

Website: www.first-lutheran.net

The Rev. Steven Woyen

Ruth Patrick

Tim Whitman

Chris Wood

Pastor

Organist

Choir Director

Office Secretary

GATHERING

The Gathering Music: “O Love, How Deep”

The Welcome & Announcements

The assembly stands

The Dedication of *Evangelical Lutheran Worship*

In the Name of the Father, and of the +Son, and of the Holy Spirit.

Amen.

Brothers and sisters in Christ:

Today in our gathering we give thanks to God for *Evangelical Lutheran Worship*,
and we pray for God’s blessing upon its use in our midst.

Rejoice in the LORD, you righteous;
praise is fitting for the upright.

Sing to the LORD a new song;
play your instrument skillfully with joyful sounds.

For your word, O LORD, is right,
and faithful are all your works.

Surely, our heart rejoices in you,
for in your holy name we put our trust.

Let us pray...

Blessed are you, O Lord our God;
you rule the universe with mercy and might.
You have enriched our lives with every good and perfect gift,
and you call us to praise you with lives of love, justice, and joy.
Accept these worship books which we offer in thanksgiving.
May all who use them be united in joy, sustained in sorrow,
and enlivened for service,
and bring us at last to the perfect worship of your heavenly banquet,
where you live and reign with the Son and the Holy Spirit,
now and forever.

Amen.

The Gathering Hymn

“Songs of Thankfulness and Praise”

ELW 310

The Greeting & Kyrie

ELW p.138

The Hymn of Praise

ELW pp.139-140

The Prayer of the Day

ELW p. 142

The assembly is seated

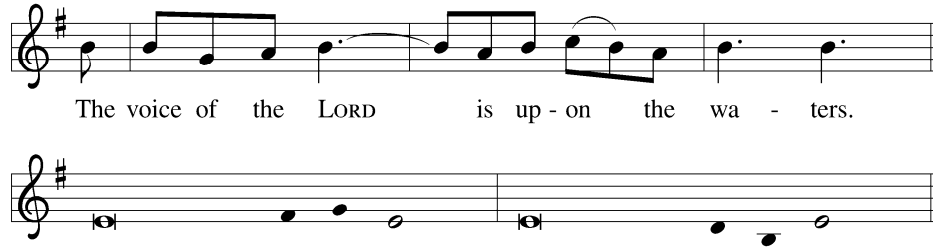
WORD

The First Reading

Genesis 1:1-5

The Psalmody

Psalm 29



- ¹Ascribe to the LORD, you gods,
ascribe to the LORD glo-ry and strength.
- ²**Ascribe to the LORD the glory due God's name;
worship the LORD in the beauty of holiness.**
- ³The voice of the LORD is upon the waters; the God of glory thunders;
the LORD is upon the mighty waters.
- ⁴**The voice of the LORD is a powerful voice;
the voice of the LORD is a voice of splendor. Refrain**
- ⁵The voice of the LORD breaks the cedar trees;
the LORD breaks the cedars of Lebanon;
- ⁶**the LORD makes Lebanon skip like a calf,
and Mount Hermon like a young wild ox.**
- ⁷The voice of the LORD
bursts forth in lightning flashes.
- ⁸**The voice of the LORD shakes the wilderness;
the LORD shakes the wilderness of Kadesh. Refrain**
- ⁹The voice of the LORD makes the oak trees writhe and strips the forests bare.
And in the temple of the LORD all are crying, "Glory!"
- ¹⁰**The LORD sits enthroned above the flood;
the LORD sits enthroned as king forevermore.**
- ¹¹O LORD, give strength to your people;
give them, O LORD, the blessings of peace. Refrain

The Second Reading

Acts 19:1-7

The assembly stands

The Gospel Acclamation

ELW p. 142

The Holy Gospel

Mark 1:4-11

The assembly is seated

The Children's Message

The Sermon

Silence for reflection.

The assembly stands
The Hymn of the Day

“O Morning Star, How fair and Bright!”

ELW 308

The Creed

ELW p. 105

The Prayers & Peace

ELW pp. 105-106

The assembly is seated

MEAL

The Offering

The Senior Choir

The assembly stands

“You are Holy”

ELW 525

The Great Thanksgiving

ELW pp. 144-145

The Thanksgiving at the Table

ELW p. 110

The Lord’s Prayer

ELW p. 112

The assembly is seated

The Lamb of God

ELW p. 146

The Distribution

Believing in the Real Presence of Christ, the Evangelical Lutheran Church in America practices Eucharistic Hospitality. Admission to the Sacrament is by invitation of the Lord, presented through the Church to those who are baptized. Those who do not wish to receive the Sacrament may approach with their arms crossed to receive a blessing.

Music during Distribution

“Spirit of Gentleness”

ELW 396

“Wade in the Water”

ELW 459

The assembly stands

The Post-Communion Prayer

ELW p. 146

SENDING

The Blessing

ELW p. 146

The Sending Hymn
“Go, My Children, with My Blessing”

ELW 543

The Sending

ELW p. 146

The Sending Music: “Morning Star”

+ + + + + + + + + +

Acknowledgements

Unless indicated all hymns and liturgical music from Sundays and Seasons.com. Copyright © 2008 by Augsburg Fortress. All rights reserved. Psalm refrain reproduced from *Psalter for Worship Year A* Copyright © 2007 by Augsburg Fortress. All rights reserved. Psalm Tone reproduced from *Psalter for Worship Year C* Copyright © 2006 by Augsburg Fortress. All rights reserved. Reprinted by permission under Augsburg Fortress Liturgies Annual License #20608.

WORSHIP LEADERS

Assisting Minister

Lynnea Thomas

Lector

Marcia Wherley

Ushers:

Gary Bixler, Don Weber, Ed Yackey, Gary Courtwright

Altar Guild:

Linda Weber, Heather Duff

PRAYER CONCERNS—Delores Himes, Lail Conner, Margaret Baker, Jane Woyen, Nancey Wherley, Tim Whitman, Tim Schram, and all nursing home residents.

The altar flowers are given by Karl & Lynnea Thomas to the Glory of God.

The eternal candle is given by Don & Linda Weber to the Glory of God.

The altar flowers on 1-4-09 given by Robyn Burkett were in honor of husband Mike’s birthday.



The Social Missions committee has chosen to once again support PAL, the Homeless Shelter and Harbor House with a Community Help Tree for the months of January, February & March 2009. Please take a tag from the tree located in the Social Hall (near the back door) purchase item and when returning items placing in box under the tree for these worthy organizations. Any money given in the months of January, February & March to Social Missions will be divided between the three organizations. As always thank you for your generous support of this mission.

NEW CHURCH OFFICE HOURS : Monday – 12noon – 4pm (Chris); Tuesday – Pastor in office; Wednesday – Pastor in office, Chris in office from 12noon – 4pm; Thursday – Pastor in office, Chris in office from 12noon-4pm; Friday – 12noon- 4pm (Chris).



Evangelical Lutheran Worship Gifts & Memorials

To the Glory of God from Pastor Steven & Pastor Eileen Woyen (5)
In memory of Ethel Anderegg & in honor of Robert Anderegg by
David & Alice Keppler.
In honor of Tim Whitman by the Senior Choir.
In memory of grandparents Carl & Lois Dreher by Doug Dreher. (5)
In honor of parents Mart & Carolyn Dreher by Doug Dreher. (5)



On Sunday, January 18th we will be having our second Chili Cookoff following worship. Bring your pot of chili and hotdogs, cheese, cornchips, sour cream and drinks will be provided. Everyone is invited to enter and to attend!

Evangelism Committee – Also on Sunday, January 18th the Evangelism Committee is promoting Wear Your Jeans to Church Sunday in conjunction with the Chili Cookoff.



On January 29th the UMC, Strasburg, will be distributing food from their new Food Pantry. The hours will be from 9:00am – 11:00am and 5:30pm – 7:30pm.

THIS WEEK AT FIRST LUTHERAN (Week of 1/11—1/18)

Sunday	<u>The Baptism of Our Lord—First Sunday after Epiphany</u> 9 AM—Christian Education/Catechism (Various locations) 10:15 AM—Holy Communion (Social Hall) 11:30 AM—Annual Meeting of the Congregation (Social Hall)
Monday	No Scheduled Activities
Tuesday	9 AM—Busy Bees (Quilter’s Room) 7 PM—Church Council (Luther Library)
Wednesday	10 AM— <i>The Divine Drama</i> (Luther Library) 7 PM—Senior Choir (Social Hall)
Thursday	7 PM— <i>The Divine Drama</i> (Luther Library)
Friday	No Scheduled Activities
Saturday	No Scheduled Activities
Sunday	<u>The Confession of Peter</u> 9 AM—Christian Education/Catechism (Various locations) 10:15 AM—Holy Communion (Social Hall) 11:30 AM—Chili Dinner (Social Hall) 3:30 PM—Cooperative Catechism (St. Paul, Bolivar)